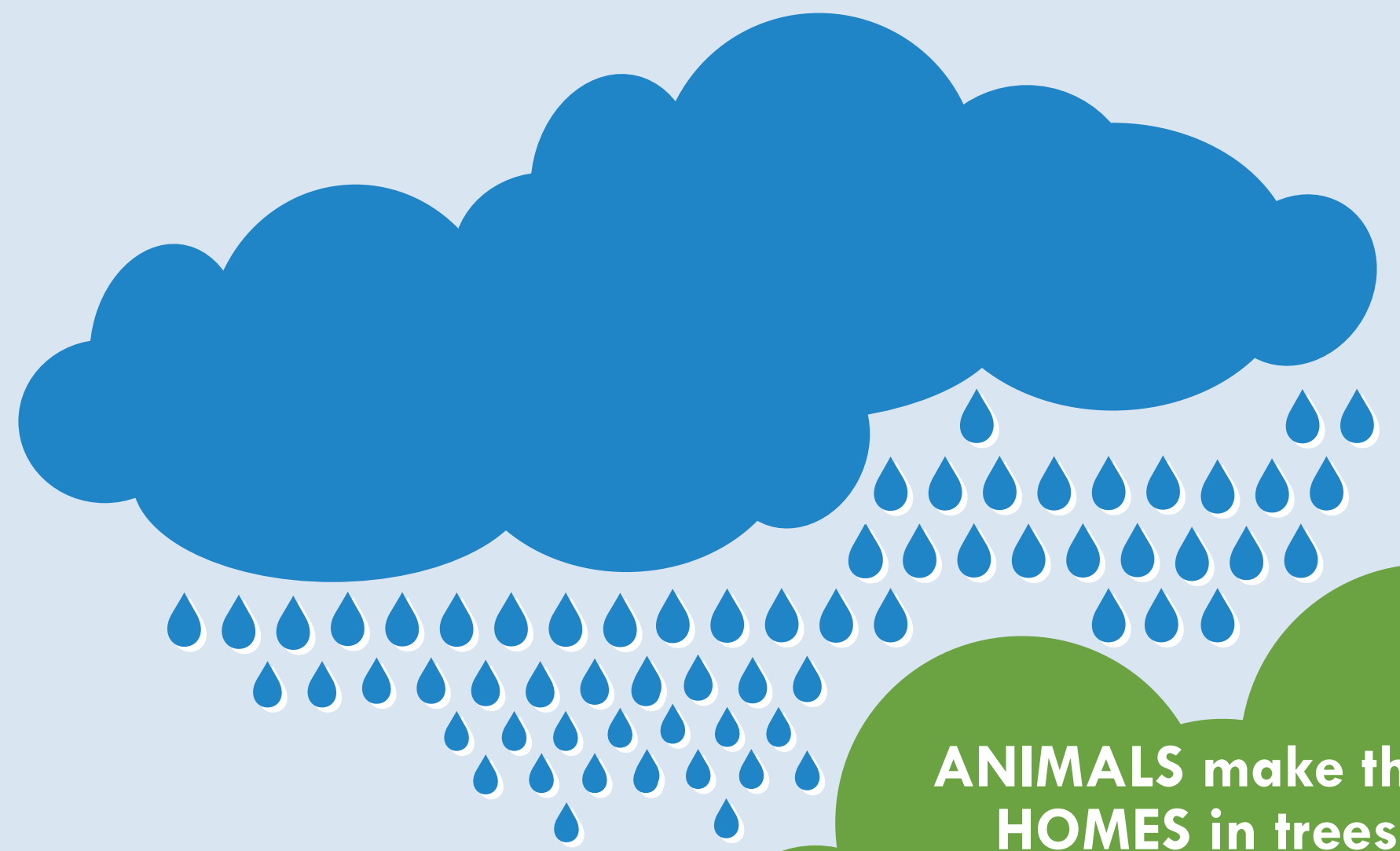
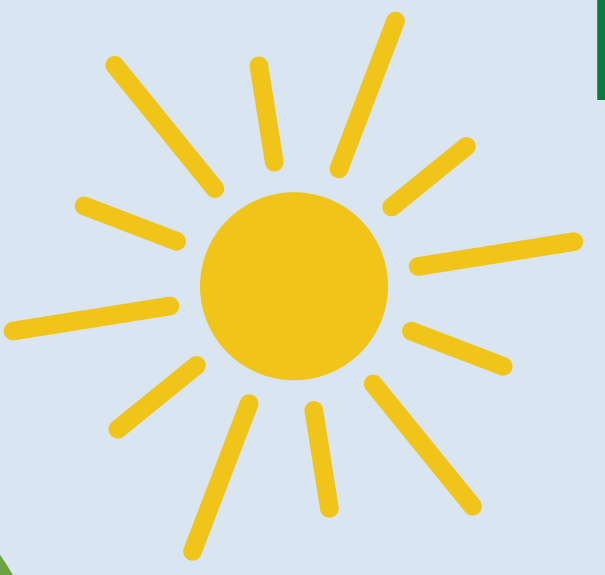


THE MANY JOBS OF A TREE

LOS MUCHOS TRABAJOS DE UN ARBOL

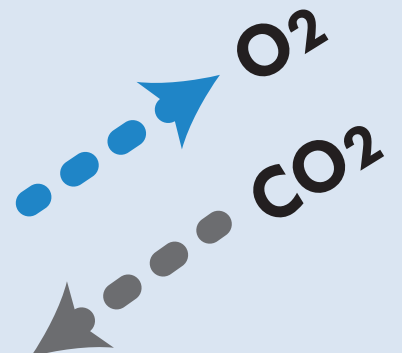


ANIMALS make their HOMES in trees.
 Los ANIMALES hacen su HOGAR en los arboles.



Can you find any of these trees?
 ¿Puedes encontrar alguno de estos árboles?

Tree SHADE keeps us COOL.
 La SOMBRA de los árboles nos mantiene FRESCOS.



Tree leaves CLEAN AIR by taking in carbon dioxide (CO2) and releasing oxygen (O2).
 Las hojas de los árboles LIMPIAN EL AIRE al absorber el dióxido de carbono (CO2) y liberando oxígeno (O2).

Trees SLOW the flow and STORE water.
 Los árboles hacen mas LENTO el flujo de agua y ALMACENAN agua.

Roots of trees FILTER pollution out of water and HOLD soil in place.
 Las raíces de los árboles FILTRAN los contaminantes del agua y SOSTIENEN el suelo en su lugar.

When a tree dies, it DECOMPOSES and SUPPORTS new life.
 Cuando un árbol muere, se DESCOMPONE y APOYA una nueva vida.

- AMERICAN ELM**  *Ulmus americana*
- BUR OAK**  *Quercus macrocarpa*
- BLACK WILLOW**  *Salix nigra*
- SYCAMORE**  *Platanus occidentalis*
- BALD CYPRESS**  *Taxodium distichum*
- TULIP POPLAR**  *Liriodendron tulipifera*



This Gardenside Neighborhood Association project was funded in part by Lexington-Fayette Urban County Government's Water Quality Management and the Stormwater Quality Projects Incentive Grant Program.
Partners: Lexington Parks and Recreation, Friends of Wolf Run.

www.gardensidelex.org
facebook.com/groups/GardensideLex




LEXINGTON



For more information
 SCAN ME

Sign Design: Students and Faculty (Senior Lecturer, Carolina Segura Bell) in LA 262 Graphics II - Spring Semester 2019, University of Kentucky. College of Agriculture, Food and Environment. Department of Landscape Architecture.
References: Department of Horticulture. College of Agriculture, Food and Environment. University of Kentucky. Lexington-Fayette Urban County Government. One Tree Planted.
Photo credit: Shutterstock, Vecteezy, iStock.